



# Aero-Pallet Systems™



**Aero-Pallet Systems™** are designed to allow one person to move heavy loads safely and efficiently. The air pallet utilizes Aero-Casters and air film technology to float the load over the surface on a micro-thin layer of air. Air pallets effectively replace forklifts, cranes, and conveyors at a fraction the cost. There are no moving parts that require costly



maintenance and the system works with standard shop air quietly and with no emissions. The load weight is spread evenly eliminating stress to the floor making expensive tracks, reinforced floor and structures unnecessary. Protects expensive floor finishes including epoxy and urethane from damage. Air pallets are perfect for moving heavy bulky loads, in manufacturing and assembly applications, transporting in cleanroom environments, moving finished products to shipping and storage areas, etc.

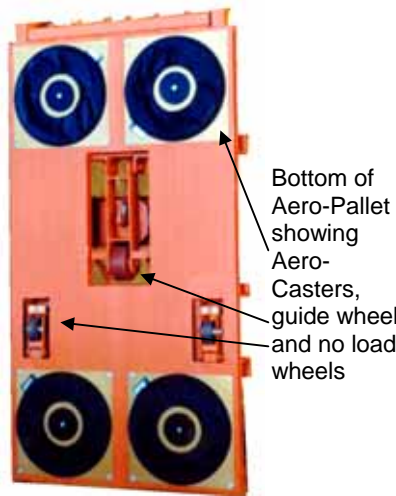


Clean Room "U" shaped Aero-Pallet with T- Handle

## Floating Your Load On "Air"

Utilizing the Aero-Caster principle, an air film is created by compressed air pumped into the circular air caster diaphragm and center plenum chamber.

When the air pressure in the air caster exceeds the weight of the load, air slowly and evenly escapes between the flexible diaphragm and the surface to create a thin, frictionless film of air .003 to .005 inches thick. The load is virtually floating over the floor surface.



Bottom of Aero-Pallet showing Aero-Casters, guide wheel and no load wheels

## Aero-Pallet Advantages:

- Easily move and rotate heavy loads.
- No floor damage.
- Low friction & omnidirectional movement facilitates control in tight spaces
- Can be customized for your specific load:
  - Handles
  - Handle throttle controls
  - No load and guide wheels
  - Risers
  - Shims
  - Chocks
  - Lift tables



**AeroGo, Inc** is a leading designer and manufacturer of Aero-Caster™ products (air casters or air bearings mounted on Aero-Planks, Aero-Pallets or Load Modules) that float from 500 lbs to 5000 tons on a virtually frictionless film of air.

AeroGo is ISO certified by ABS Quality Evaluations, Inc and complies with SAE AS9003: 2001 and ISO 9001:2000 quality standards.



ISO 9001:2000 certified #34629  
SAE AS9003 certified #40102

AP 0407

# AERO-PALLET™ SYSTEM SPECIFICATIONS

## Fixed-Mounted Aero-Casters

Model (1)	System Capacity lbs. (kg) (2)	No. and Model of Aero-Casters (1)	Pallet Surface Area ft <sup>2</sup> (m <sup>2</sup> )	Pallet Thickness inches (mm)	Effective Lift Height inches (mm)	Recommended Air Volume scfm (L/sec) (3)	Rated Operating Pressure psig (kg/cm <sup>2</sup> ) (4)	Equipment Net Weight lbs (kg)
4P8__5	2,000 lbs (910 kg)	4-8__	2.0 to 5.0 ft <sup>2</sup> (0.19 to 0.46m <sup>2</sup> )	1-7/8 in (47.6 mm)	3/8 in (9.5 mm)	42 scfm (19.8 L/sec)	12.5 psig (0.88 kg/cm <sup>2</sup> )	55 lbs (25 kg)
4P8__10	2,000 (910)	4-8__	5.1 to 10.0 (0.47 to 0.93)	1-7/8 (47.6)	3/8 (9.5)	42 (19.8)	12.5 (0.88)	85 (39)
4P8__15	2,000 (910)	4-8__	10.1 to 15.0 (0.94 to 1.4)	1-7/8 (47.6)	3/8 (9.5)	42 (19.8)	12.5 (0.88)	115 (52)
AS-25	5,000 (2,270)	<i>Ask About the Air Shuttle. Includes a T-Handle, fingertip controls, Guide Wheel, and no-load wheels.</i>						
4P12__10	8,000 (3,630)	4-12__	4.0 to 10.0 (0.37 to 0.93)	1-7/8 (47.6)	3/4 (19.1)	84 (39.6)	25 (1.76)	85 (39)
4P12__15	8,000 (3,630)	4-12__	10.1 to 15.0 (0.94 to 1.4)	1-7/8 (47.6)	3/4 (19.1)	84 (39.6)	25 (1.76)	115 (52)
4P12__20	8,000 (3,630)	4-12__	15.1 to 20.0 (1.4 to 1.9)	1-7/8 (47.6)	3/4 (19.1)	84 (39.6)	25 (1.76)	145 (66)
4P12__25	8,000 (3,630)	4-12__	20.1 to 25.0 (1.9 to 2.3)	1-7/8 (47.6)	3/4 (19.1)	84 (39.6)	25 (1.76)	175 (80)
6P12__30	12,000 (5,450)	6-12__	25.1 to 30.0 (2.3 to 2.8)	1-7/8 (47.6)	3/4 (19.1)	126 (59.5)	25 (1.76)	210 (95)
6P12__35	12,000 (5,450)	6-12__	30.1 to 35.0 (2.8 to 3.3)	1-7/8 (47.6)	3/4 (19.1)	126 (59.5)	25 (1.76)	240 (109)
6P12__40	12,000 (5,450)	6-12__	35.1 to 40.0 (3.3 to 3.7)	1-7/8 (47.6)	3/4 (19.1)	126 (59.5)	25 (1.76)	270 (123)
6P12__45	12,000 (5,450)	6-12__	40.1 to 45.0 (3.7 to 4.2)	1-7/8 (47.6)	3/4 (19.1)	126 (59.5)	25 (1.76)	300 (136)
4P15__10	14,000 (6,350)	4-15__	7.0 to 10.0 (0.65 to 0.93)	1-7/8 (47.6)	7/8 (22.2)	98 (46.3)	25 (1.76)	90 (41)
4P15__15	14,000 (6,350)	4-15__	10.1 to 15.0 (0.94 to 1.4)	1-7/8 (47.6)	7/8 (22.2)	98 (46.3)	25 (1.76)	120 (54)
4P15__20	14,000 (6,350)	4-15__	15.1 to 20.0 (1.4 to 1.9)	1-7/8 (47.6)	7/8 (22.2)	98 (46.3)	25 (1.76)	150 (68)
4P15__25	14,000 (6,350)	4-15__	20.1 to 25.0 (1.9 to 2.3)	1-7/8 (47.6)	7/8 (22.2)	98 (46.3)	25 (1.76)	180 (82)
6P15__30	21,000 (9,530)	6-15__	25.1 to 30.0 (2.3 to 2.8)	1-7/8 (47.6)	7/8 (22.2)	147 (69.4)	25 (1.76)	215 (98)
6P15__35	21,000 (9,530)	6-15__	30.1 to 35.0 (2.8 to 3.3)	1-7/8 (47.6)	7/8 (22.2)	147 (69.4)	25 (1.76)	255 (116)
6P15__40	21,000 (9,530)	6-15__	35.1 to 40.0 (3.3 to 3.7)	1-7/8 (47.6)	7/8 (22.2)	147 (69.4)	25 (1.76)	275 (125)
6P15__45	21,000 (9,530)	6-15__	40.1 to 45.0 (3.7 to 4.2)	1-7/8 (47.6)	7/8 (22.2)	147 (69.4)	25 (1.76)	305 (138)
4P21__21	28,000 (12,700)	4-21__	13.0 to 15.0 (1.2 to 1.4)	2 (50.8)	1-1/8 (28.6)	112 (52.9)	25 (1.76)	130 (59)
4P21__20	28,000 (12,700)	4-21__	15.1 to 20.0 (1.4 to 1.9)	2 (50.8)	1-1/8 (28.6)	112 (52.9)	25 (1.76)	160 (73)
4P21__25	28,000 (12,700)	4-21__	20.1 to 25.0 (1.9 to 2.3)	2 (50.8)	1-1/8 (28.6)	112 (52.9)	25 (1.76)	190 (86)

- Identify Aero-Caster series according to application requirements.  
To complete the model number, insert N (Standard Neoprene), T (Tuffcoat™) or U (Urethane) in the blank space.
- Load must be positioned so individual Aero-Caster capacities are not exceeded.
- At maximum load on smooth-troweled and sealed concrete or equivalent.
- Recommended supply pressure: 25 psig above rated operating pressure.

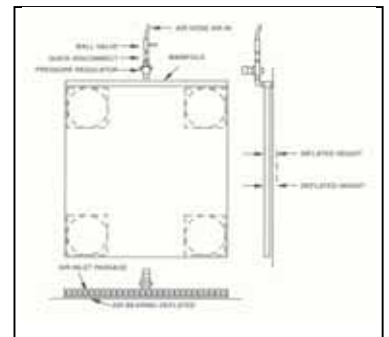
Heavy Duty Aero-Caster specifications available by contacting the factory.  
All dimensions are nominal - Consult Factory for specifications  
For Floor Load Specifications - Consult Factory.

### Standard Equipment Includes:

Air manifold on narrow end with 3/4-in (19.1mm) NPT fitting. Recommended for air supply hose lengths up to fifty (50) feet.  
Automatic Flow Control Valves: automatically compensate for offset loads and irregularities in floor surface.  
Pressure regulator. On/off valve for operator control.

### Options:

- Handle:** Waist high and "U" shaped. Ball valve and pressure regulator are mounted on cross member.
- Slide-Mount Aero-Casters:** Eliminate the needs to unload the Aero-Pallet and turn it over for Aero-Caster inspection/maintenance.
- Spring Loaded No-Load Wheels:** Necessary if you wish to use Aero-Pallets as a pallet jack, or move the Aero-Pallet without floating it.
- No Load Swivel Wheels:** Same as spring loaded no load wheels except work load cannot be placed on deflated Aero-Pallet.
- Supplementary Lift Bags:** Provides additional lift height.
- Roll Chocks-Fixed:** Permanently mounted on Pallet surface to prevent rolls/reels from shifting while the Aero-Pallet is in motion.
- Roll Chocks-Automatic:** Automatically activated when roll/reel is rolled onto Aero-Pallet.



Since 1967  
 1170 Andover Park West  
 Seattle, WA USA 98188  
 Phone: 206-575-3344  
 Toll-Free 800-426-4757  
 Fax: 206-575-3505  
 Email: [info@aerogo.com](mailto:info@aerogo.com)  
 Website: [www.aerogo.com](http://www.aerogo.com)