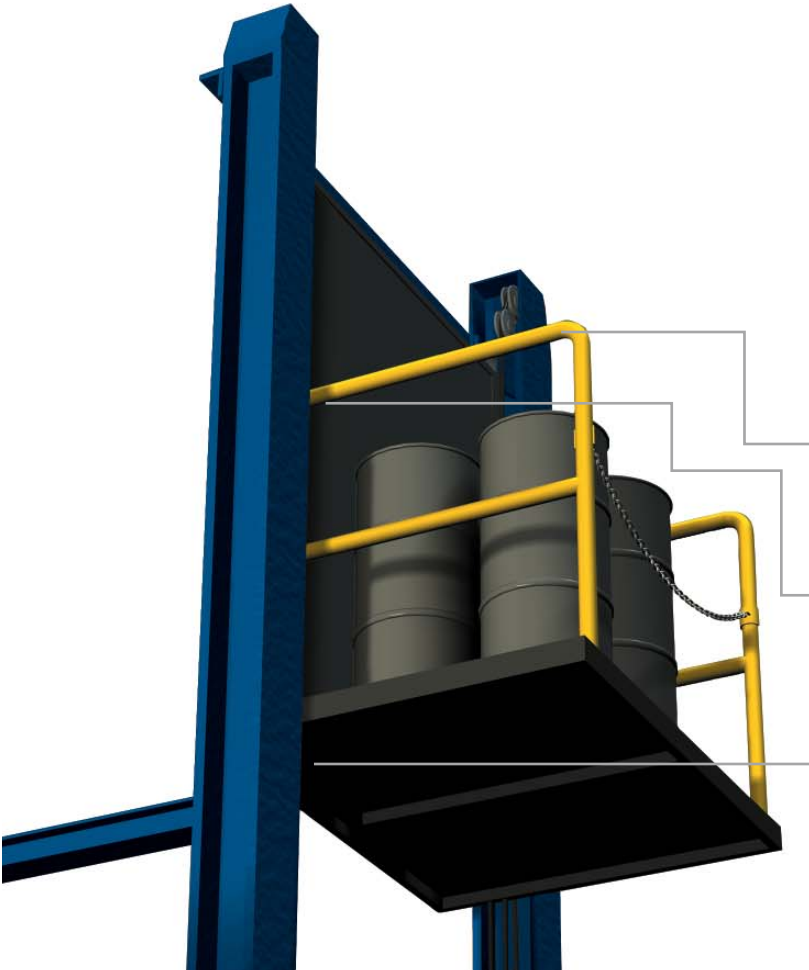


# HYDRAULIC CANTILEVERED FREIGHTLIFTS



888-811-9876 www.Autoquip.com



## TYPICAL APPLICATIONS

Hydraulic Freightlifts are economical, easy to maintain and provide a safe way to move materials between two levels requiring less than 28 feet of vertical travel. Freightlifts are an economical alternative to forklifts or elevators with savings up to 75%. They are regulated under the National ASME B20.1 code as conveyors.



**10"-12" diameter sheaves provides large bend radius and longer cable life**



**Safety cams to limit platform freefall to less than 4"**



**Platform stabilization rollers to prevent binding**

## FEATURES & BENEFITS

**Zero drift re-pressurization system** Keeps the platform from drifting when at upper level for extended periods

**Lubricated-for-life composite bearings on all pivot points** Maintenance free bearings, no greasing required

**Turned, ground, polished and hard-chromed pins** Extended bearing life

**Solid steel construction** Minimal platform deflection

**Five Sheave Cable Reeving** Prevents side loading on the sheaves to greatly extend the life of the sheaves and cable

**Swaged Cable Ends** 100% cable strength, no cable clips or Crosby clips to adjust with this type connection

**6x37, proof tested, pre-stretched wire rope** Absolutely safe, durable, and long lasting

**Power unit with UL recognized components** The very best components go into all Autoquip products

**Safety Cams** Prevents platform freefall to less than 4 inches

**UL listed controls** Dust, dirt, and drip resistant industrial enclosure

**NEMA 12 pre-wired control box** Industrial grade control enclosure

**Relief valve** Overload protection

**Built and designed in accordance with ANSI B20.1 code** Designed to meet or exceed all industry standards

**Safety labels comply with ANSI Z335** Employee safety is enhanced

**One year warranty** Built to last and we back this up with the best Warranty in the industry

## OPTIONS

- Gates and enclosures to meet customers requirements
- Specific state code packages
- Mast splice to meet installation conditions
- Optional on-load/off-load configurations

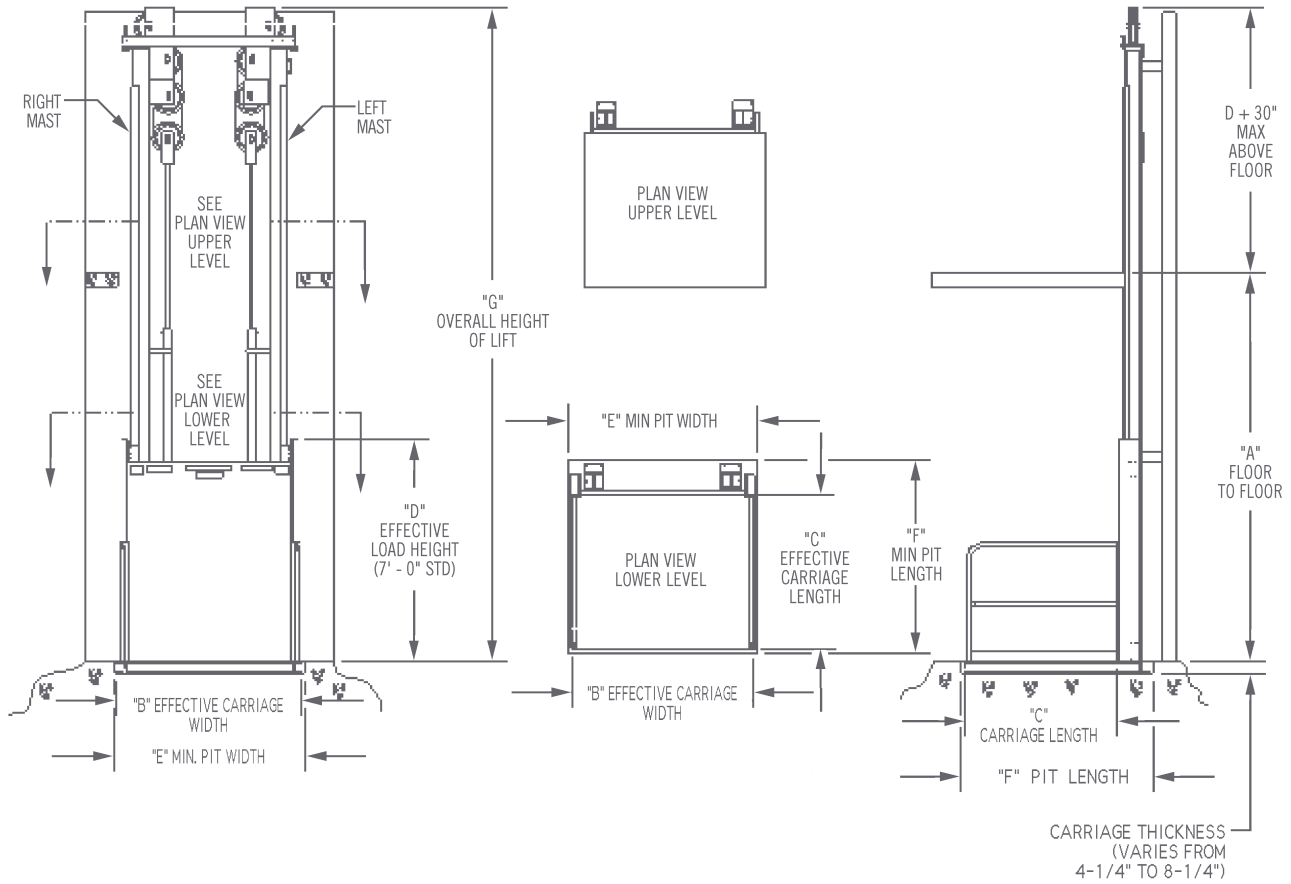
## APPLICATIONS & MARKETS

- Mezzanine Applications
- Distribution Facilities
- Self-storage Or Mini Storage Facilities
- Auto Dealer Part Departments
- Retail Outlets
- Restaurants
- Hospitals

# HYDRAULIC CANTILEVERED FREIGHTLIFTS



888-811-9876 www.Autoquip.com



## SPECIFICATIONS

| MAX. TRAVEL<br>(feet) | CAPACITY<br>(pounds) | PLAT. MINIMUM<br>width x length<br>(in feet) | PLAT. MAXIMUM<br>width x length<br>(in feet) | HP<br>minimum | SPEED<br>fpm | MODEL  |
|-----------------------|----------------------|--|--|---------------|--------------|--------|
| 28                    | 1,000                | 4 x 4  | 8 x 8  | 5             | 25           | FLHC-1 |
| 28                    | 2,000                | 4 x 4  | 8 x 8  | 5             | 25           | FLHC-2 |
| 28                    | 3,000                | 4 x 4  | 8 x 8  | 5             | 25           | FLHC-3 |
| 28                    | 4,000                | 4 x 4  | 8 x 8  | 5             | 25           | FLHC-4 |
| 28                    | 5,000                | 4 x 4  | 8 x 8  | 5             | 25           | FLHC-5 |
| 28                    | 6,000                | 4 x 4  | 8 x 6  | 5             | 25           | FLHC-6 |