

# MECHANICAL CANTILEVERED FREIGHTLIFTS

888-811-9876 [www.Autoquip.com](http://www.Autoquip.com)



## TYPICAL APPLICATIONS

Mechanical Freightlifts are designed to stop at multiple positions to access heights up to 100 feet and to have more precise control of their stop-start movements. They are mechanically operated by means of a brake motor and gear reducer with a common drive shaft. Raising and lowering of the carriage platform is accomplished with heavy-duty roller chain.



**Slack Chain Safety Stop**



**Safety cams to limit carriage freefall to 4"**



**Lubricated-for-life bushings on guide rollers**

## FEATURES & BENEFITS

- Chain driven** Permanently adjusted, no maintenance or chain tensioners required
- High tension rollers** Smooth platform travel
- Lubricated-for-life composite bearings on all pivot points** Maintenance free bearings, no greasing required
- Turned, ground, polished and hard-chromed pins** Extended bearing life
- Solid steel construction One piece drive shaft** Minimal platform deflection
- Automatic carriage-jam sensing and protection** Protects the equipment and the employees
- Pre-assembled drive base unit** Decreased cost of field installation

- Safety Cams** Prevents platform freefall to less than 4 inches
- UL listed controls** Dust, dirt, and drip resistant industrial enclosure
- NEMA 12 pre-wired control box** Industrial grade control enclosure
- SSAC Overload Relay** Overload protection
- Built and designed in accordance with ANSI B20.1 code** Designed to meet or exceed all industry standards
- Safety labels comply with ANSI Z335** Employee safety is enhanced
- One year warranty** Built to last and we back this up with the best Warranty in the industry

## OPTIONS

- Gates and enclosures to meet customers requirements
- Specific state code packages
- Mast splice to meet installation conditions
- Optional on-load/off-load configurations

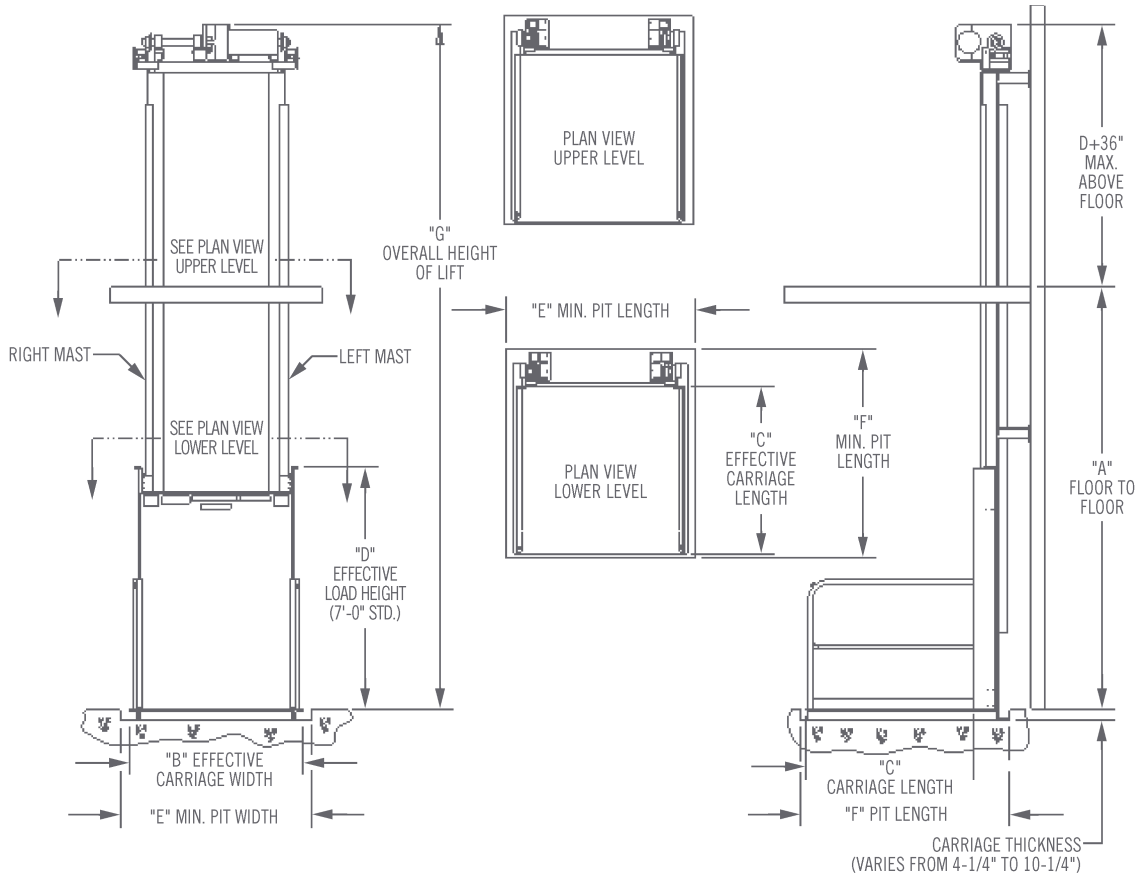
## APPLICATIONS & MARKETS

- Mezzanine Applications
- Multi-story Manufacturing Facilities
- Distribution Facilities
- Self-storage Or Mini Storage Facilities
- Auto Dealer Part Departments
- Retail Outlets
- Restaurants
- Multi-story Office Complexes
- Hospitals

# MECHANICAL CANTILEVERED FREIGHTLIFTS



888-811-9876 www.Autoquip.com



## SPECIFICATIONS

MAX. TRAVEL (feet)	CAPACITY (pounds)	PLAT. MINIMUM width x length (in feet)	PLAT. MAXIMUM width x length (in feet)	HP minimum	SPEED fpm	MODEL
100	1,000	4 x 3	8 x 8	3	30	FLMC-1
100	2,000	4 x 3	8 x 8	3	30	FLMC-2
100	3,000	4 x 3	8 x 8	5	30	FLMC-3
100	4,000	4 x 3	8 x 8	5	30	FLMC-4
100	5,000	4 x 3	8 x 8	7.5	30	FLMC-5
100	6,000	4 x 3	8 x 8	7.5	30	FLMC-6