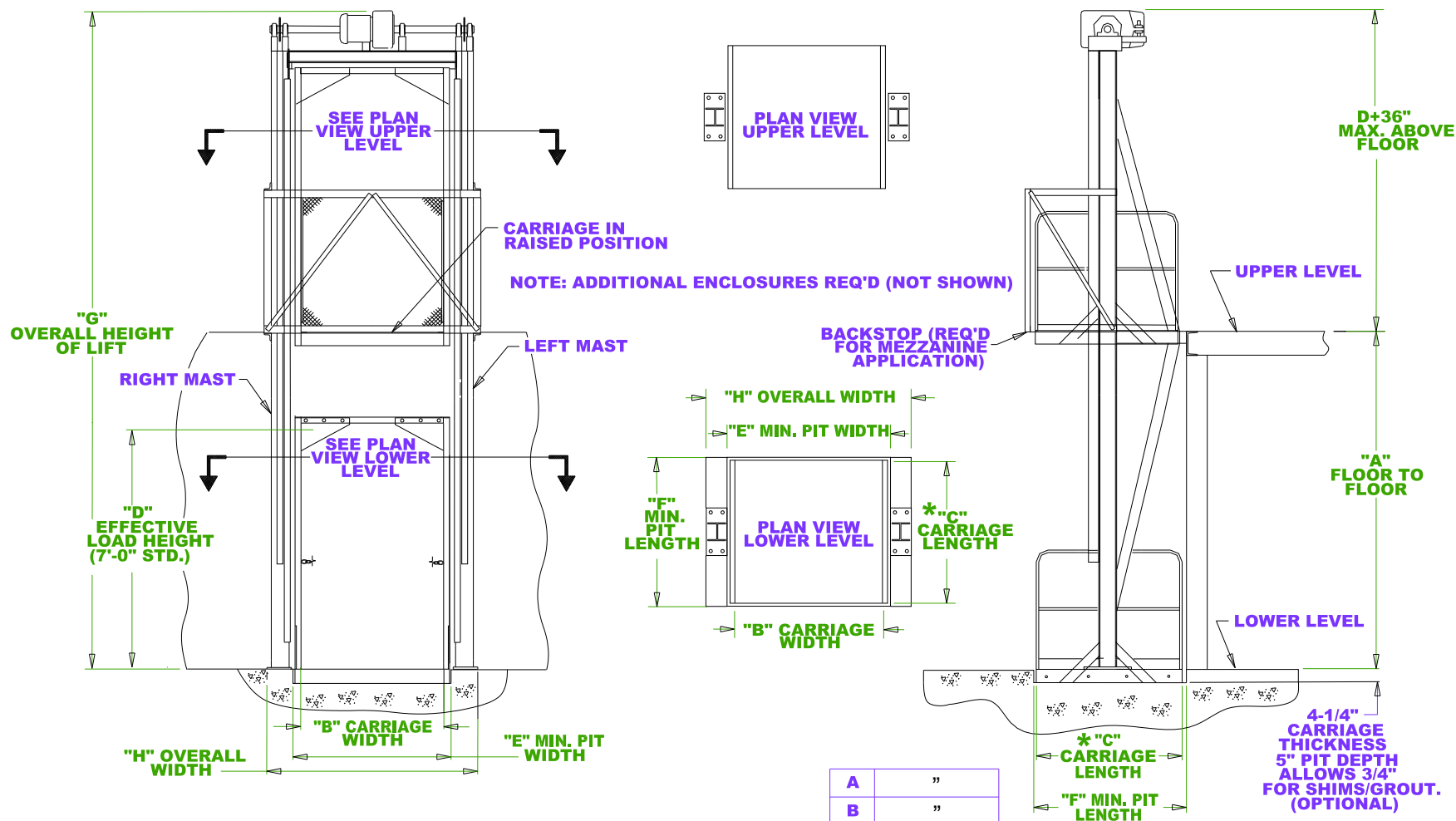


GENERAL ARRANGEMENT APPLICATION DRAWING TYPICAL 2-POST MECHANICAL STRADDLE



CODE COMPLIANCE

AUTOQUIP VERTICAL RECIPROCATING CONVEYORS (VRC'S) MEET ALL DESIGN AND SAFETY REQUIREMENTS SET FORTH IN ASME B20.1. AUTOQUIP GUARANTEES ASSISTANCE IN SECURING CODE COMPLIANCE IN ALL 50 STATES. ULTIMATE RESPONSIBILITY FOR GAINING STATE AND LOCAL CODE APPROVAL IS THE RESPONSIBILITY OF THE BUYER OF THE VRC. PLEASE ACQUAINT YOURSELF WITH THE PERMITTING AND/OR LICENSING EXPENSES AND REQUIREMENTS OF THE LOCAL REGULATORY AGENCIES IN THE INSTALLATION AREA.

A	"
B	"
C	"
D	"
E=B+6"	"
F=C+2"	"
G=A+D+36"	"
H=B+24"	"

***NOTE: ON USABLE CARRIAGE SPACE A "C" LOAD PATTERN WILL REQUIRE A HAND RAIL ON THE END OF THE CARRIAGE WHICH WILL TAKE UP 2" OF USABLE CARRIAGE LENGTH.**

THIS DRAWING IS A SALES GUIDELINE ONLY AND IS NOT INTENDED TO BE USED FOR CONSTRUCTION OR BUILDING MODIFICATIONS. ACTUAL DIMENSIONS WILL BE REFLECTED ON APPROVAL DRAWING.

PROPOSAL DRAWING
QUOTE NO. _____

(NOT TO SCALE) 82600670 REV. 7-8-04

© COPYRIGHT RESERVED
AUTOQUIP CORPORATION
2004

Autoquip
AUTOQUIP CORP.
1058 W. INDUSTRIAL AVE.
GUTHRIE, OK. 73044-1058
888-811-9876 WWW.AUTOQUIP.COM